
Application of Remote Sensing in Monitoring and Modeling Urban Sprawl in Jos North and Jos South LGAs of Plateau State

Abstract

The search-light of this article was beamed at Jos North and Jos South Local Government Areas because of the unprecedented and un-planned growth with massive expansion experienced over the years; with visible evolution that is substantial in all its ramifications. The temperate climate, natural and beautiful topological attractions which caused the influx of admirers that brought about abrupt swollen population in the city centers. The two cities (Jos and Bukuru) have experienced improved infrastructures, despite the perennial in-security suffered in the past ten (10) years. The aftermath of these crises gave rise to clusters of settlements around the city centers and along the fringes thereby expanding their boundaries. Urbanization is considered as the most influential driver of land use and land cover changes. The integration of remote sensing (RS) and Geographic Information System (GIS) techniques made it possible and effective tool for detecting urban sprawl and modeling of changes over a period of time. In order to maintain a systematic urban growth pattern at regional or global level, effective planning policy must be put in place at the local level of authority before gravitating to the centre. This aimed at quantifying the

magnified urban growth in Jos North and Jos South LGAs of Plateau State using Shannon's Entropy Approach to measure growth with the aim of determining the compactness or dispersion of built-up land growth in Jos and Bukuru urban centers. The entropy values obtained for this study was 0.15 in 2000 and 0.54 in the year 2015, while in the year 2024 the entropy value was 0.234; all are very close to the upper limit value of $\log(n)$ i.e., -1.0. 4 indicating a dispersed growth. The study also emphasized the potential of Landsat TM data, Global landcover facility (GLCF) and (United State Geological Survey (USGS) data, which covered both Jos North and Jos South LGAs and environs for a period of 24 years and it has a path and row of P188 and R53. The findings facilitated the understanding of the present and projecting the future growth scenarios. Furthermore, preparation of effective planning and management strategies for controlled and systematic urban growth both at states and local government areas that have the tendency of growth be encouraged at all levels.

Keywords: Urban, Sprawl, Growth, Shannon Entropy, TM, GIS, RS and CBD

1. Introduction

The aftermath of the Nigeria independence in 1960 heralded urban growth as a result of massive movement of people from the hinter-land to the urban centres for livelihood. Urban growth was differentiated from urbanization and urban development, rather urban growth refers to the increase in human population and development within a city or metropolitan area [15]; while, urban sprawl refers to the low density urban that used to be rural [10]. It is a common phenomenon in Nigeria and it is often encouraged by following the master plan and environmental laws. Urban sprawl can mean one or two concepts which include: development on the fringe of a city or metropolitan area, as opposed to already-developed areas and or development that is oriented towards cars and unfriendly to people on foot and the environment.

It is generally characterized by a single family home, often detached, with little in the way of common services (like a grocery store) and the complete lack of multi-unit residential units (i.e. apartment buildings) surrounding areas (rural) to the urban center. Urban Sprawl is regarded as an important problem in many cities throughout the World particularly in metropolitan cities [15].

The land of urban sprawl which are seen as land that has lost their rural characteristics, yet cannot be defined as urban include specific uncertainties that resulted into various problems such as un-planned urban growth and use of non-agricultural purpose. It is an hinter-land urban areas.

It was described as urban sprawl or as a leapfrog development [11]; whereas It was also looked at as growth with cancer or virus [3].

The pattern of settlement in Jos CBD and Bukuru township were fashioned after religious affiliations. For instance, Ungwan Rogo, Ungwan Rimi and Gangare are all of the same faith; and are within Jos CBD with huge human population. While Tudun-Wada, Kabong, Apata and Utan are contiguous and in close proximity with same faith also with high human population; and they felt more secured living in close proximity. In fact, majority of these places were not planned and are prone to environmental hazards. Whereas, Bukuru township had evolved to an extent but better planned than Jos CBD. Development has gradually shifted to Shen, Du, Latyia, Gura-Topp and Kwang. Presently, it is quite difficult to define in terms of growth the boundary between Bukuru town and Jos.

It is against this background that this article deployed remote sensing tool and GIS in order to monitor and model the pattern of sprawl or leapfrog development that has taken place over the years in Jos and Bukuru centers and suggest how to open up new area for even development and socio-economic growth.

50 2. Related Work

51 Urban Sprawl was better described which is more suitable rather than defining it [18, 6]. But, in the past 15 years, the study areas, Jos and
52 Bukuru have witnessed a unique type of growth. The impact of persistent sectarian crisis which eventually ravaged the areas led to
53 segregation in the pattern of neighbourhoods based largely on religious affinity. Consequently, pockets of new clusters emerged around the
54 city centers whose inhabitants share common religion and tradition.

55 Despite the incessant crisis, Jos and Bukuru remain a strategic commercial and agricultural hub in Nigeria, especially in the Northern states.
56 The prevailing dynamics accounted for the type of leapfrog settlement experienced in the recent times. The growth extended to the nearby
57 localities like Zinariya, along Bauchi road, where massive development is on-going. Others include Latya, Kwang, Gura-Topp, Shen and Du:
58 all these localities were initially meant for agricultural and mining purposes, but the past 15 years rapid growth evolved, both residential and
59 economic activities to the extent that, there is no thin line between Jos and Bukuru and the city center; development has engulfed the entire
60 place.

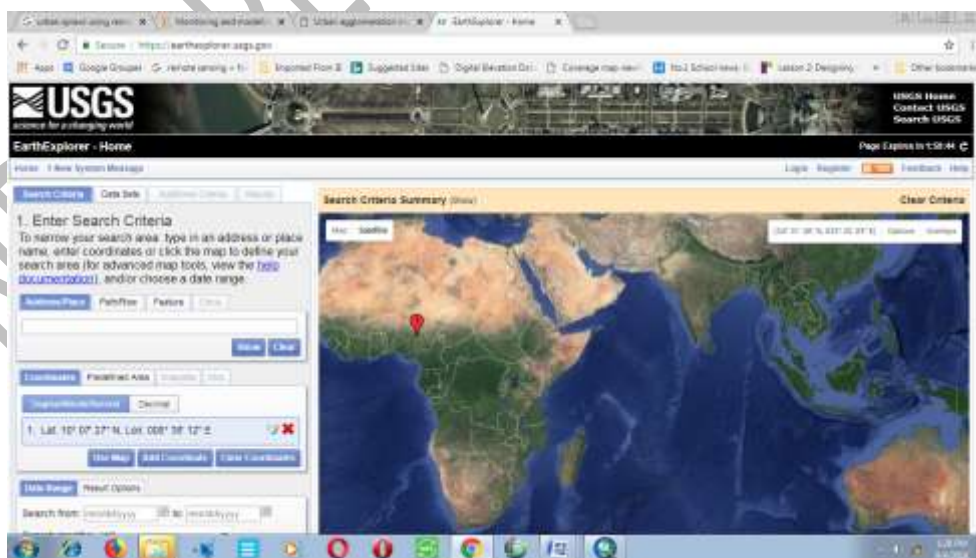
61 The Burgess concentric zone model for an ideal city [2] was adopted for this article and it is hinged on three main ideologies namely; that
62 settlement sprawling is based on ecological approach in explaining land use pattern; residential aggregation plus social segregation and
63 spatial patterns of various land use zones. But of the three ideologies, Burgess adopted the concepts used by plant ecologists (i.e., idea of
64 competition, dominance, invasion and succession) within the city, people compete for limited space (Competition); those who are best able
65 to pay (Dominance) achieve the most desirable locations (Invasion and Succession). Those individuals and functions with the lowest level of
66 economic competence have the least choice, occupying the poorest locations. The Central Business District (CBD), is the most accessible
67 location that is attracted by all sorts of commercial activities. The shortage of land induced keen competition and struggle for survival
68 amongst the populace. The location was dominated by those activities with high rentals.

69 The idea of land use in the city center by Burgess was thought to continue with each successive neighborhood moving further from the CBD.
70 The new immigrants would move into the cheapest residential areas of the city. When they became economically established, they would
71 migrate outwards. Thus lower residential class moved to adjacent neighborhoods and more affluent residents moved further outwards. Land
72 value decreases with increasing distance; the highest land value is at the city centre because of keenest competition and scarcity of land
73 within different areas of the city, different single functions formed the dominant element [17, 2,1].

74 3. Materials and Method

75 3.1. Materials

76 Materials and data used for this article were drawn from different sources representing Jos North and Jos South LGAs of
77 Plateau State covering a period of 15 years. The imageries are cloud-free and have excellent quality. Sub-scenes covering the
78 study areas were further extracted from other imageries. The major data input for this article are remotely sensed satellite
79 images of varied resolutions obtained from GLCF (Global landcover facility) and USGS (United State Geological Survey),
80 which covered the study area and its environs for a period of 15 years. The path and row of the study area is (P188 and R53).
81 The two images used for the study are the Landsat Thematic Mapper (TM) of 2000 with 30 meters resolution and Landsat 7
82 ETM+ also with 30meter resolution. Figure 1 below revealed the USGS satellite imagery website used for the study area.



83
84 **Figure 1:** United State Geological Survey web site (USGS).

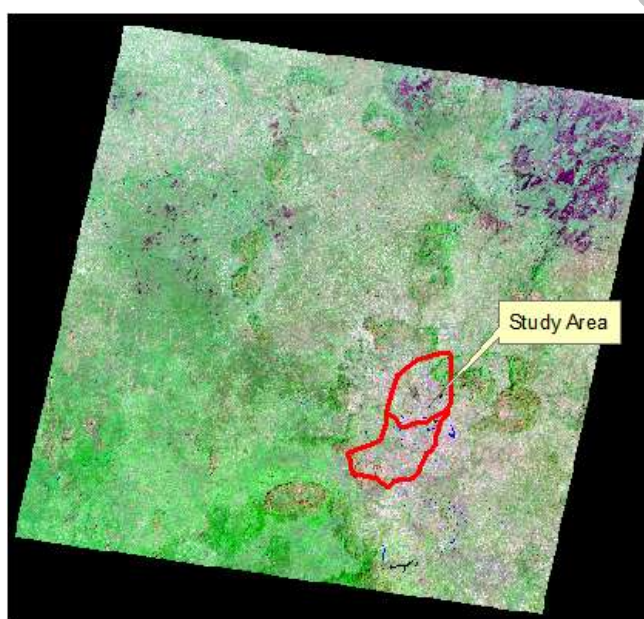
85 Source: Author's Lab work (2025)

86 3.2.Method

87 The approach here was to acquire satellite imageries from LandSat multi-temporal dates (TM 1990, ETM 2000 and ETM+
88 2015 and 2024). Pixel-based classification was applied in order to classify the imageries. Six categories of classes were
89 generated as Land Use/ Land Cover which include:

- 90 1) Thick Forest
- 91 2) Light Forest
- 92 3) Built up area
- 93 4) Farm land
- 94 5) Water bodies
- 95 6) Bare land

96 The accuracy assessment was generated to validate the Land use Land cover image classification of the two dates. The
97 extraction by attribute function using extraction tool in ArcGIS 10.1 was deployed in extracting the built-up areas only and
98 other features were discarded. Eleven (11) zones were created using 2500m buffer from the city center. The total Area of the
99 built up area in each zone was computed using zonal Analysis in Arc Gis 9.3. The value generated were imported in Microsoft
100 Excel for analysis to ascertain the magnitude of Urban Sprawl. The Shannon's entropy and comparative analysis were the key
101 factors in analyzing sprawl. Figure 2 below is the complete scene of the satellite imageries for Jos and Bukuru, the study areas.



102
103 **Figure 2:** LandSat scene covering the study area.

104 Source: Author's Field Work (2025)

105 The pre-processing activities were carried out in order to enhance the quality of the image and the readability of features on the
106 imagery. This was done whereby, all the existing data in the form of maps, images and tables were converted into a suitable
107 form for permanent storage within the GIS database says, Prince and Florence (2013). This also include image restoration,
108 which was the correction of distortions, degradations and noise introduced during the imaging process. These errors can
109 degrade the quality of the remotely sensed data collected, which may have impact on the accuracy of human or machine
110 assisted image. The radiometric enhancement was performed to sharpen the area of interest; that is Jos North and Jos South
111 LGAs of Plateau State. Table 1 below is the resultant effect of image enhancement.

112 **Table 1.** Radiometric Enhancement.

RADIOMETRIC ENHANCEMENT	These functions enhance the image using the values of individual pixels within each band.
LUT (Lookup Table) Stretch	Creates an output image that contains the data values as modified by a lookup table.
Histogram Equalization	Redistributes pixel values with a nonlinear contrast stretch so that there are approximately the same number of pixels with each value within a range.

Histogram Match

Mathematically determines a lookup table that converts the histogram of one image to resemble the histogram of another.

Brightness Inversion

Allows both linear and nonlinear reversal of the image intensity range.

Haze Reduction

Dehazes Landsat 4 and 5 TM data and panchromatic data.

Noise Reduction

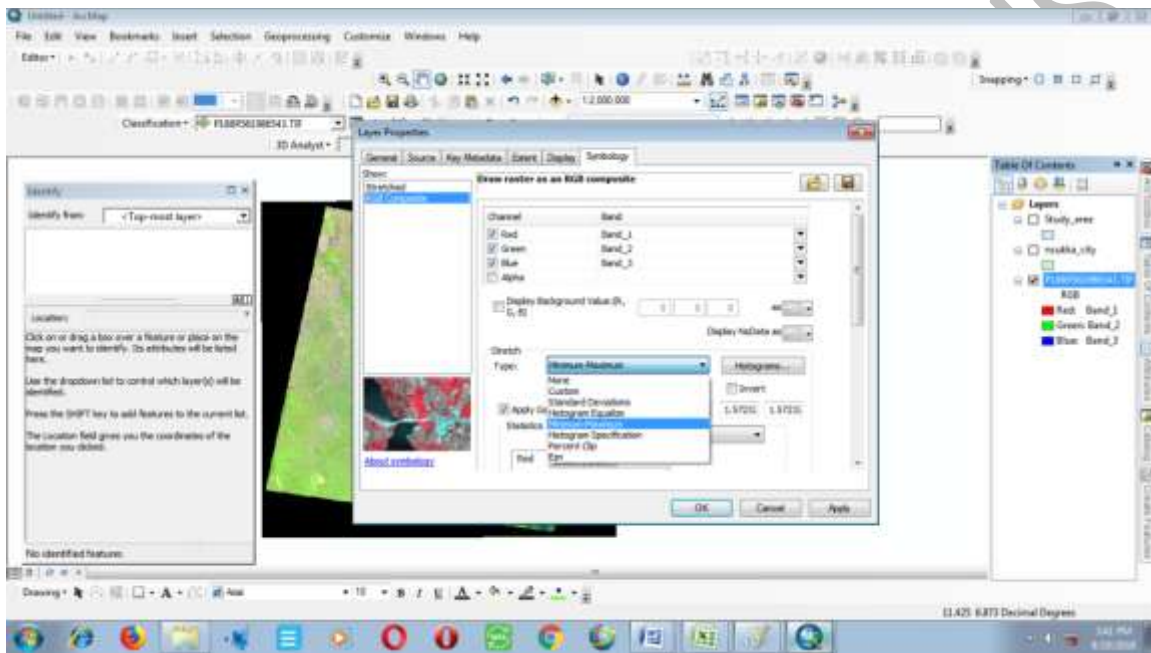
Removes noise using an adaptive filter.

Destripe TM Data

Removes striping from a raw TM4 or TM5 data file.

113 Source: ERDAS Imaging 9.1(Tutorial1)

114 The screen-shot in figure 3 below was the window of operation when image enhancement took place at prompt of
115 ArcGIS10.1 of the file geo-database.



116

117

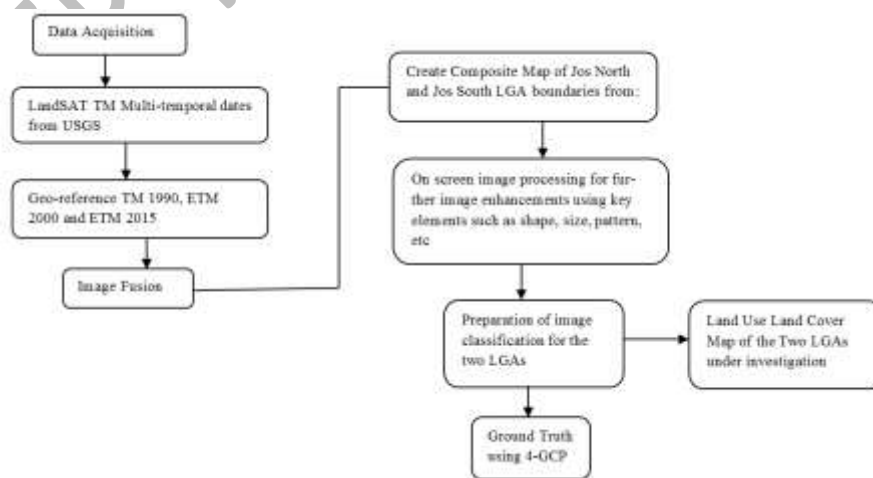
Figure 3: Image Enhancement in ArcGIS.

118

Source: Author's Field work(2025)

119

Below figure 4is the sequence of operations followed to achieve the said image processing for this article:



120

121

Figure 4: Sequence of Operation.

122

Source: Author's Field Work (2025)

123

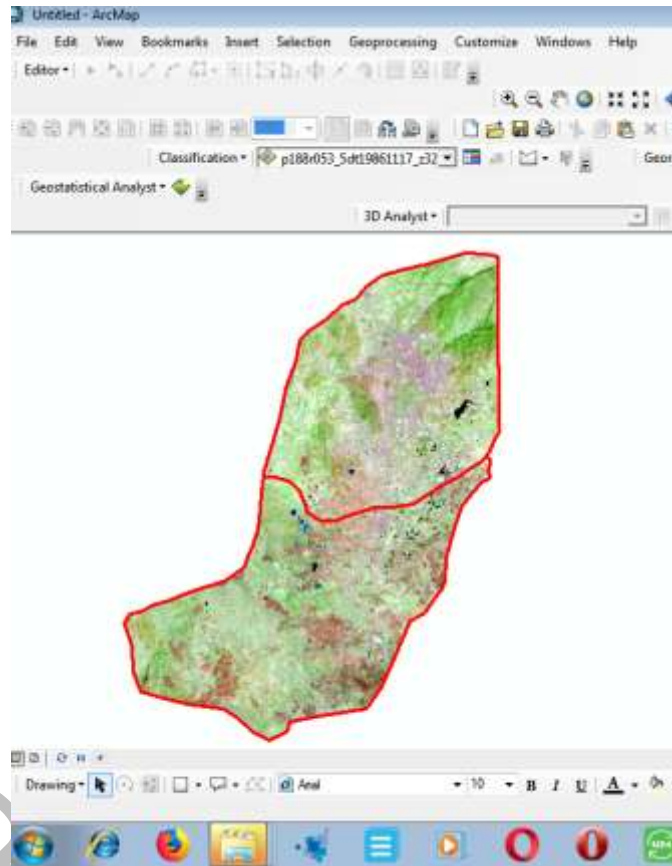
4.Results and Discussions

124 **Output 1: Resampling by Sub-setting**

125 Sub-setting of the Study Area and Resampling

126 Sub-setting refers to breaking out a portion of a large file into one or more smaller files. Often, image files contain areas much
127 larger than a particular study area. In these cases, it is helpful to reduce the size of the image file to include only the area of
128 interest (Jos North and South LGAs). This will not only eliminate the extraneous data in the file, but it will also speed-up
129 processing time due to the smaller amount of data to process. This is imperative, particularly when dealing with multi-band
130 data.

131 The color composite image was resampled for this article using the maximum and minimum coordinate of the study area and
132 the pixel size was defined as 30meter for LandSat TM and UTM and the same reference system was used in re-sampling
133 process. The output image is the subset image of the study area. The image re-samples operation enable registration of multi-
134 date image of the same area as shown in figure 4 below:



135 **Figure 5:** Re-sampled Land cover of the area under investigation.

136 Source: Author's Field Work (2025)

137 **Output 2**

138 Land Use Land Cover Classification

139 A supervised (that is, full Gaussian approach) classification using the maximum likelihood algorithm in ArcGIS 10.1 was
140 employed to generate six (6) main Land use Land cover classes for all images (Table 4below) Built up area (1), farm land (2)
141 dominated by human exploitation such as agriculture area, plantation area, bush burned, and bush cleared for road construction
142 etc, light forest dominated by grasses and bush land (3), Thick Forest area : area dominated by thick vegetation covered .
143 (4)River: area covered by water body and it ramification (5), and Bare land: including field and open area. These Land use
144 Land cover classes were derived from images of years 2000 and 2015, then part of the year 2024 for the study areas. This was
145 made possible because the researcher is familiar with the study area through dedicated field observation, whereby the spectral
146 characteristics of the classes in the sampled area were not too difficult to identify. In the training sample 75 samples set were
147 used to identify the spectral signature of the feature classes, the figure 5 below revealed the classification process of Land use
148 and Land Cover of both Jos North and Jos South LGAs, the study areas.
149

150 **How Image Classification was carried out in ArcGIS**

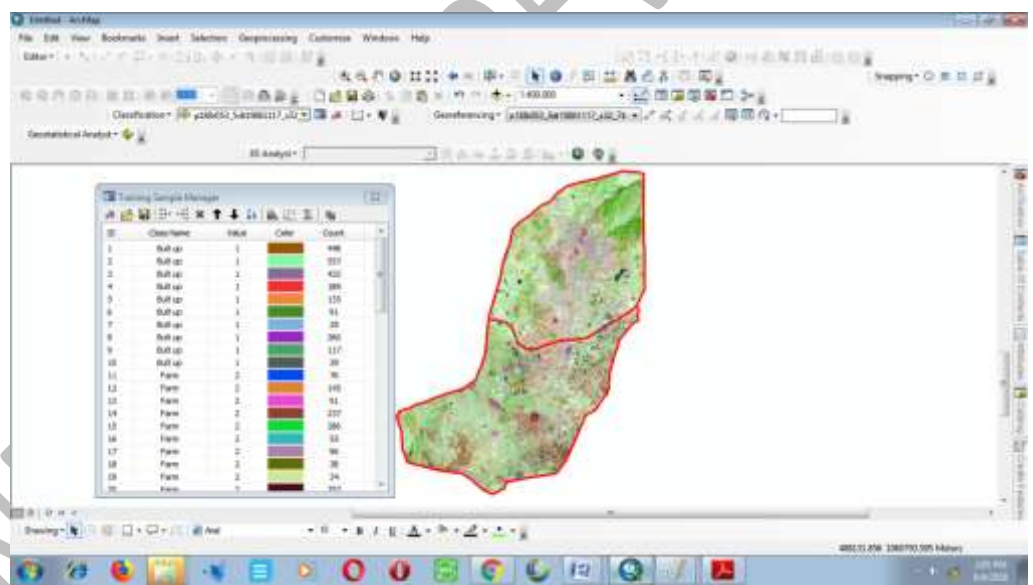
151 The goal of classification is to assign each cell in the study area to a known class (supervised classification) or to a cluster
152 (unsupervised classification). In both cases, the input to classification is a signature file containing the multivariate statistics of
153 each class or cluster. The result of each classification is a map that partitions the study area into known classes, which
154 correspond to training samples, or naturally occurring classes, which correspond to clusters defined by clustering. Classifying
155 locations into naturally occurring classes corresponding to clusters is also referred to as stratification. The Image Classification
156 toolbar provides an integrated environment to help with the multi step workflow that is necessary for performing a
157 classification.

158 When performing classification, group similar features into classes by assigning the same symbol to each member of the class.
159 Aggregating features into classes allows you to spot patterns in the data more easily. The definition of a class range determines
160 which features fall into that class and affects the appearance of the map. By altering the class breaks (the boundary between
161 classes), it can create very different-looking maps. Classes can be created manually, or use a standard classification scheme.
162 What determines to which class or cluster each location will be assigned is dependent on the multivariate statistics that are
163 calculated on the input bands. Each cluster is statistically separate from the other clusters based on the values for each band of
164 each cell within the clusters. The statistics establishing the cluster definition are stored in a signature file.

165 There are four steps in performing a classification:

- 166 1) Create and analyze the input data.
- 167 2) Produce signatures for class and cluster analysis.
- 168 3) Evaluate and, if necessary, edit classes and clusters.
- 169 4) Perform the classification.

170 The multivariate file containing the spectral signature of the satellite imagery for the study area classified the cells in the
171 imagery into six classes as show Table 1.



172
173 **Figure 6:** Six Classes of LULC process in ArcGis 10.1:

174 Source: Author's Field work (2025)

175 **Output 3:**

176 The multi-variate file containing the spectral signature of the satellite imagery for the area under investigation classified the
177 cells in the imagery into six classes as shown in Table 2 below; while figure 5 below revealed the six classes of LULC of the
178 study area.

179 **Table 2.** The Selection of Land use / Land cover classes.

Code	TrainingSample	Description
1	Built up area	Area occupied by people for Habitation
2	Farm Land	Farm land area including agriculture area, and plantation area ,
3	Savannah area	Area Occupied by grass and bush
4	Forest	Area occupied by Thick vegetation.
5	River	area cover by water bodies and its ramification
6	Bare land	Open area and field.

Source: Author's Field Work (2025)

Output 3

Shannon Entropy Estimation

The present study aims at quantifying the urban growth in Jos North and Jos South LGAs of Plateau State using Shannon's Entropy Approach is worth exploring scientifically. The study area was divided into eleven (11) zones using multiple ring buffers created around the city centers at 2500 meters interval as revealed in Figure 6 below. At the end, clip out the built-up area of each buffer zone, then compute the density of the built-up area in each zone. Entropy values were also calculated for all these zones. The results of the entropy calculation are shown in Tables 2 (for year 2000) and 3 (for year 2015 and part of 2024) below.

The Shannon's Entropy was computed to detect the urban growth phenomenon following Yehand Li (2001), using the formula below:

$$H_n = -\sum P_i \log_e(P_i)$$

Where; P_i is the proportion of the variable in the zone and n is the total number of zones.

Entropy value ranges from 0 to $\log_e(n)$ Where $\log_e(n)$ =Maximum limit of Entropy. B note the followings below:

- 1) If the value is closer to zero, then the distribution is very compact
- 2) If the value is closer to $\log_e(n)$, then the distribution is dispersed (Sudhira et al., 2004).

The classified land use maps of the two periods (year 2000 and 2015 and part of 2024) were further rec-classified into two categories of built-upland and non-built-up land areas (see figure 6 below). The red spots represent clustered built up areas, while the black background represents non built up areas or land areas for other uses'

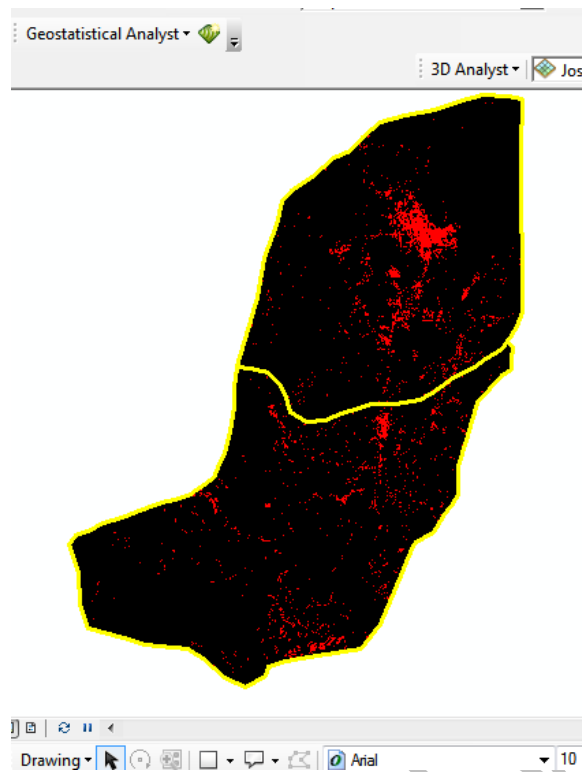


Figure 7. Classified Built-up Land and non-built-up Land areas of the study areas.

Source: Author's field work (2025)

The two classified maps (Figure 6 above) were then converted to 30 meter vector GRID data using the Zonal statistics tool in ArcGIS. Only the median value corresponding to the built-up area was kept and the rest are discarded. In order to calculate Shannon's Entropy, the study area was divided into 11 zones using multiple ring buffers created around the city centers at 2500 meters interval (see figure 7 below). At the end, the clipping out of the built-up areas of each buffered zone were carried out in order to ascertain the actual density of built up areas per zone, which gave rise to the computation of the total area per zone in the study area.

Entropy:

Entropy refers to a measure of the amount of energy that cannot be used to do work. The thermodynamic free energy is the amount of work that a thermodynamic cannot perform: it is the internal energy of a system minus the amount of energy that cannot be used to perform work. That unusable energy is given by the entropy of a system multiplied by the temperature of the system. Entropy values were calculated for all the eleven zones using the above formula and the results of the entropy values are shown in a Tabula format, (see Tables 4 and 5).

Run the 1_Multi-Buffer Concentric Zones Tools

7. In Arc Tool Box, double click on 1_multiBuffer concentric Zone Tools to open it.

8. Click SHOW HELP in order to view information about the tool

9. Click on the help parameters, the help sidebar provides information about the parameters

10. Click the TOOL HELP button to open the help file

11. Specify the following parameters:

- a) Input features Jos (point.Shp)
- b) Unique ID Field: Point_ID
- c) Maximum Buffer: 2500 meters
- d) Increment: 2500 meters
- e) e, Create a folder for the output
- f) Keep overlap output? No is the default answer

-
- 226 12. Click OK, wait for a long while, then dismiss the status dialog when completed
- 227 13. Click the ADD DATA button and add Point_MultiRing.shp file to the map document.
- 228 14. Right click on the layer name in order to open the Attribute Table: Note the field headings
- 229 a) Area: Total area of each buffer ring
- 230 b) First_Point: this corresponds to the original unique ID field specified
- 231 c) LAST_BUFF: this corresponds to the buffer distance and it is a multiple of the distance specified
- 232 15. Close Table when finished.

233 **Table 1:** Multi-Ring Buffer Polygon.

FID	Id	B_Area	FIRST_Poin	LAST_Point
0	1	1.7028	2500	2500
1	2	5.7681	2500	5000
2	3	8.7686	2500	7500
3	4	11.3796	2500	10000
4	5	14.7609	2500	12500
5	6	19.4148	2500	15000
6	7	17.4317	2500	17500
7	8	15.2973	2500	20000
8	9	10.4697	2500	22500
9	10	8.9130	2500	25000
10	11	1.5885	2500	27500

- 234
- 235 Source: Autho's Field Work (2025)
- 236 16. In Arc Tool Box; double click 2_MultiIntersectAreas to open it
- 237 17. The Help sidebar provides information about each parameter
- 238 18. This step is optional: Click the HELP TOOL button to open the help file
- 239 19. Specify the following parameters:
- 240 a) Input Buffer features: Jos (Point_Shp)
- 241 b) Unique ID Field: First_Point
- 242 c) Buffer Distance Field: LAST_BUFF
- 243 d) Buffer Area Field: B_Area
- 244 e) Input Land cover Features: landcover.Shp
- 245 f) Land Cover Class Field: Number
- 246 g) Open a folder for the Out-Put
- 247 20. Click OK; wait for a short while, then dismiss the status dialog when completed

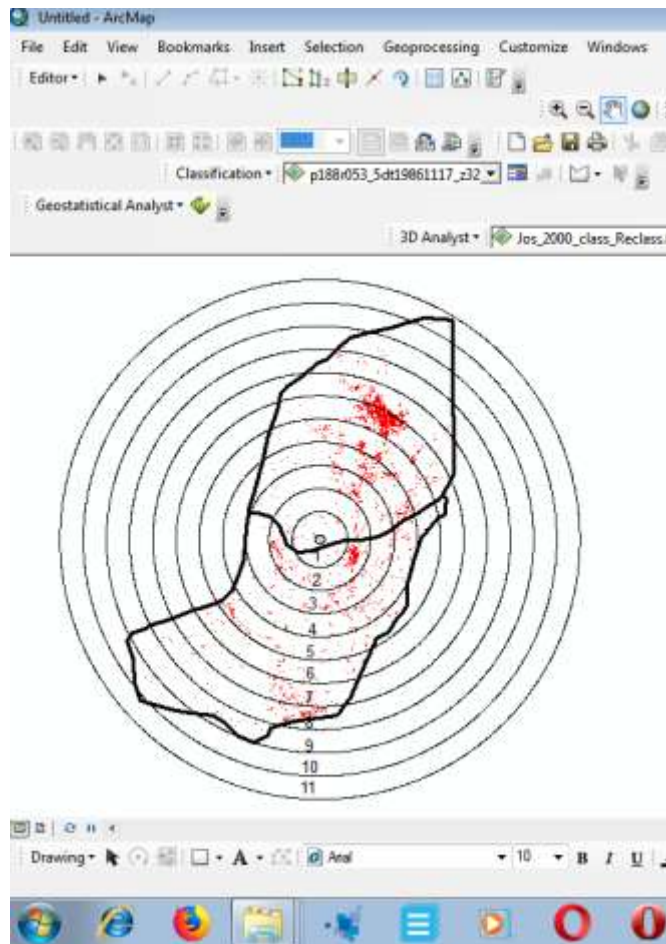


Figure 8: Ideal construction of a city center.

Source: Author's Field Work (2025)

The table below as generated at prompt revealed the result of the calculation of entropy of ArcGIS 10.1:

Table 2: Shannon Entropy Computation for the Eleven Zones

ID	Zone	Area [Zone] in sqm	% of built-up	built up den	POCNI	1/PDCNI	Log ⁿ PDCNI	Entropy	ln(1/PDCNI)	abs.entropy	ID	Zone	Area [built up area] in Sqkm
1	1	1.7028	2.33	73.18140536	0.73191485	0.13599	6.450388	0.805588	1.0792	0.1283	1.84414027	0.186997	1
2	2	8.7681	9.32	81.9067919	0.81906792	0.12112	7.826939	0.882322	1.0792	0.1072	2.03182231	0.286092	2
3	3	8.7786	15.26	56.40106395	0.56401064	0.11947	8.270649	0.922759	1.0792	0.10125	2.1247214	0.253631	3
4	4	11.3796	21.81	32.33100718	0.32331007	0.11042	9.056101	0.956948	1.0792	0.09793	2.25344799	0.143309	4
5	5	10.7909	28.12	52.2612317	0.52261232	0.11108	8.902713	0.938373	1.0792	0.09629	2.19762088	0.242998	5
6	6	19.4648	34.41	56.42393806	0.56422918	0.11951	8.367255	0.922582	1.0792	0.10217	2.12462592	0.252086	6
7	7	17.4312	40.68	42.84570388	0.42845704	0.09075	11.01891	1.042139	1.0792	0.08764	2.39961299	0.217772	7
8	8	18.2972	67.01	32.58101788	0.32581018	0.08092	14.80088	1.381827	1.0792	0.07128	2.878798	0.183333	8
9	9	10.4697	53.26	19.45721087	0.19457211	0.04164	24.0172	1.380522	1.0792	0.05228	3.1787791	0.132254	9
10	10	9.5126	39.52	14.52242977	0.1452243	0.03172	31.8277	1.489687	1.0792	0.04429	3.4305339	0.109458	10
11	11	8.1283	89.87	7.87679812	0.07876798	0.01388	38.82731	1.777698	1.0792	0.02748	4.09130288	0.082081	11
12	12	1.2438	72.12	1.724697267	0.01724697	0.00365	273.737	2.427234	1.0792	0.00025	5.61216781	0.002502	12
13	13	120.3489	490.08	4.72113496						0.91844		1.285242	
14													
15													
16													
17													
18	VALUE_1												
19		1702800											
20		5760100											
21		876900											
22		11279600											
23		14760900											
24		5841800											
25		17401200											

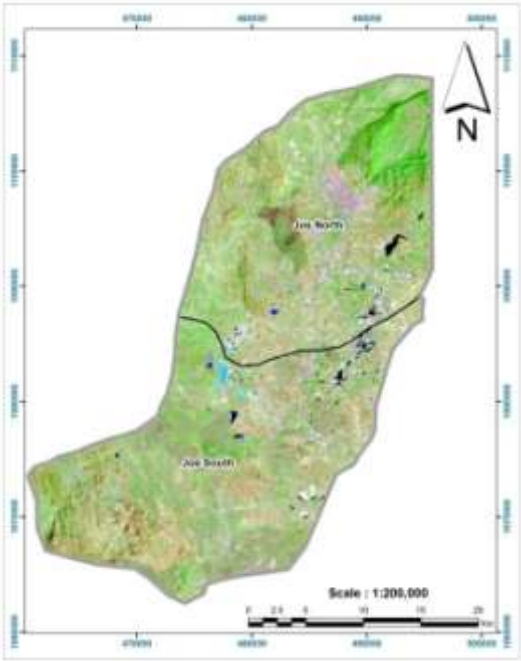
Source: Author's Field Work (2025)

Table 5 above was generated from the computation of the entropy values for the two periods under investigation using excel spread sheet. The table revealed the number of zones in the study area; the area per zone; the number of built up area per zone; proportionate density of built up areas; entropy values; and the Logⁿ i.e. the limit of entropy value per zone. The table also shows percentage of growth per zone and from its value, a zone can be said to be either dispersed, compact or a leapfrog settlement from the city center.

260 **Output 5**

261 Composite map of LandSat image

262 Figure 4.5 below is the LandSat 7 TM composite map of the study area as at the year 2000. It shows that, those dark patches
263 represented built up areas around the two city centers of Jos and Bukuru. As at the year 2000, there were leapfrog settlements,
264 particularly in Jos North LGA, but not much was experienced in Jos South LGA. However, there were indications and the
265 propensity of movements of settlements away from the city center in the year 2000, due to shift in intense agricultural activities
266 at the edges of the city centers. Besides, the center was already becoming too congested for any form of activities, therefore,
267 the propelling forces of pulling away from the city center has started to reveal from the year 2000.



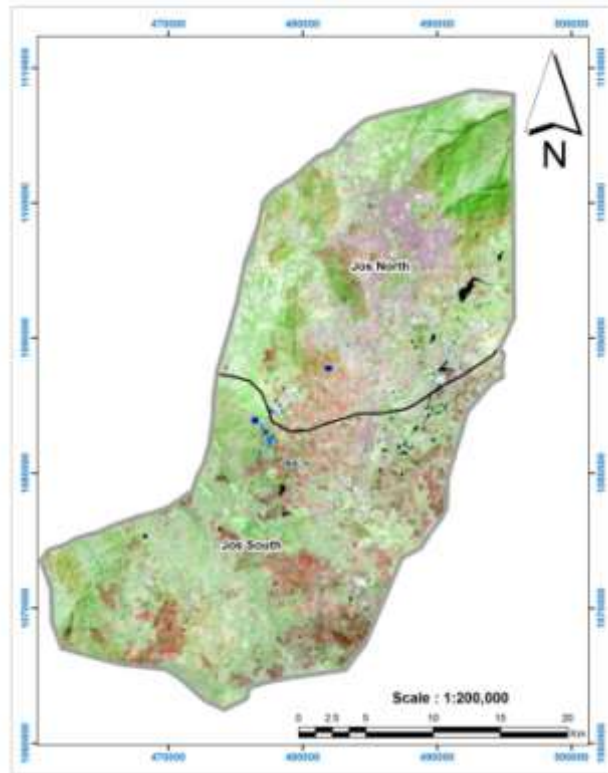
268 **Figure 9:** LandSat 7 TM of 2000 Composite Map of the Study Areas.

269 Source: Author's Field Work (2025)

270 **Output 6**

271 Composite Map of the Study Areas in 2015 and Part of 2024

272 But when compared with the LandSat 7 TM composite map of the year 2015 and some months in 2024, there were denser built
273 up areas closer to the edges of the two LGAs than in the year 2000. The 2015 composite map of the study area experienced
274 more leapfrog settlements sprawling along Zinariya, Azurfa, Yelwan Nabor, Maza and Naraguta: all in Jos North LGA. While
275 in Jos South, settlement sprawling extends Bukuru to Shen, Du, Gura-Topp, Latya, Sha'aka, Guut and Diye-Zaramaganda (See
276 figure 9 below).
277



278
279 **Figure 10:** 2015 and Part of 2024 Composite Map of the Study Areas

280 Source: Author's Field Work (2025)

281 **Output 6**

282 Land use /Land cover of the study area for the Year 2000.

283 The six classes of Land use and Land cover of the study area for the year 2000 was revealed in figure 9 below and when
284 compared with the density of built-up areas after 15-years, there is a remarkable difference in the two IGAs, particularly when
285 the image is zoomed. More leapfrog settlements were experienced as shown in figure 9 below. The density at the city centers
286 are abysmally high, thereby causing pressure on the available social infrastructures, pollution of different types and distorting
287 the aesthetics of the city centers.

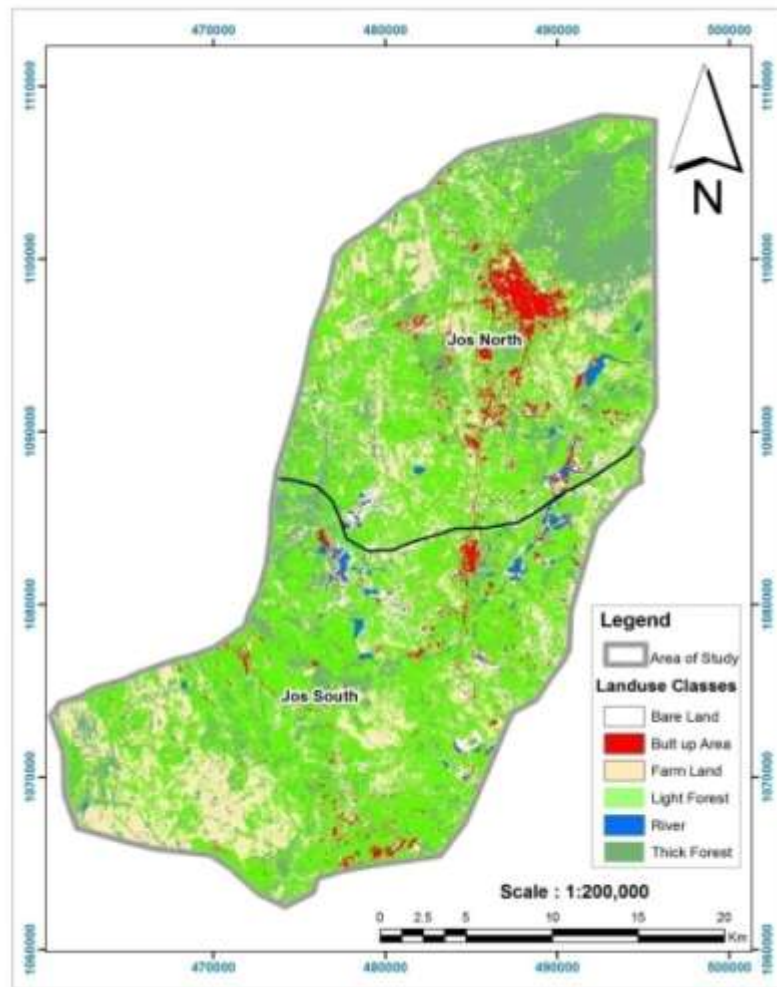


Figure 11: Land use/Land cover of the Study area in 2000

Source: Author's Field Work (2025)

Output 7

Statistical Analysis of LULC of the Study Areas

The table below is the summary of Land use and Land cover for the year 2000 classified into six different classes with areas covered in m² by each land cover and their overall percentage compared with the total land area of the study in meter square (m²). The feature class with the largest land cover is the High forest (421210.3700 m²) and equivalent to 49.37% land cover, followed by Thick forest with an area of 16688.5700 m² which represents 19.57 percent land cover, areas used for Farming covers' 13977.6800 m² which is equal to 16.38%, Bare land is 7808.1300 m² representing 9.15 percent, Built up areas occupies 3755.3400 m² which represents 4.40% and only 1.12 percent was occupied by Rivers (958.2300 m²). This means, the study area in the year 2000 has less than 5% of the total land area as built up, which also implies that, human activities and population is not significant enough to trigger settlement sprawling outside the city centers

Table 3: Statistical Table of LULC of 2000 of the study area.

Pixel Value	Classes	Count	Area m ²	PCT(%)
1	Built Up	41726	3755.3400	4.40
2	Farm	155252	139726800	16.38
3	Light Forest	467893	421210.3700	49.37
4	Thick Forest	185423	16688.5700	19.57
5	River	10647	958.2300	1.12

6	Bare Land	86757	7808.1300	9.15
Total		947698	852928200	100.00

Source: Author's Labwork (2024).

Figure 10 below is the histogram describing the Land use and Land cover of the two contiguous LGAs under investigation for the year 2010

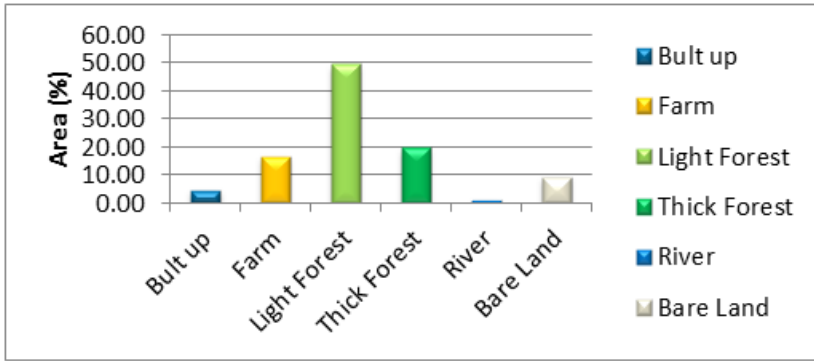


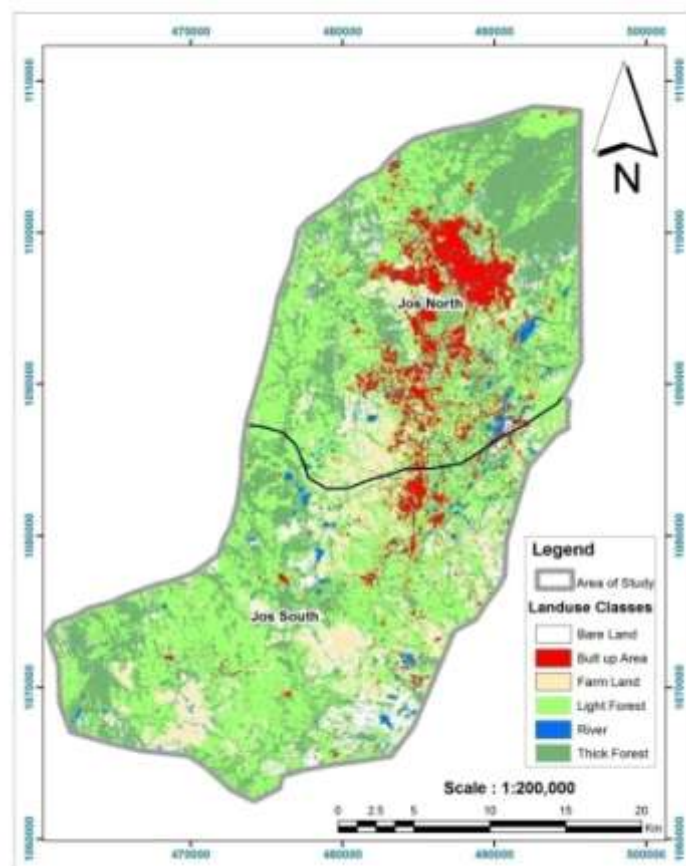
Figure 12: Histogram of LULC of study area in 2010.

Source: Author's Field Work (2025)

Output 7

Land use/Land cover of 2015

After fifteen (15) years interval with some months in the year 2024, the study area has experienced a significant change in Land use and Land cover as revealed in figure 11 and table 5 below. There were leapfrog settlements at the edges of the city centers boundaries in the two Local Government Areas under review. The proportion of built-up areas and farming activities in 2015 when compared with year 2000/2010 is quite significant. Meaning, built-up areas have increased tremendously.



UNDER

REVIEW JNHST

315
316
317
318
319
320
321
322
323
324
325
326
327
328
329
330
331
332
333
334

Figure 13. LULC of the Study area in 2015.

Source: Author’s Field Work (2025)

The Land use/Land cover of the study area in 2015 revealed that built-up area accounted for 7.37 % covering 62859600m², Farm land occupied 7.16% (61052400 m²), Light forest and thick forest occupied 47.13% and 27.75%, almost 401961600 m² and 236705400 m² respectively, River occupied 2.05% which is equal to 17459100 m², while Bare land occupied 8.55% with 72890100 m land cover² of the study area. What it imply is that, human activities and population has increased significantly to the extent that, the bare land and forest areas have started shrinking when compared with the year 2000: whereby farming activities has increased trimendously by half of what it was 15-years ago, while the volume of water in the river has increased and covers more land space because of the topography and human activities or due to climate change in the recent times. The increase in farming activities suggests that there is economic diversification compelled with the poor socio-economic status of the residents in the study area, so many resolve to subsistence farming.

Table 4: Statistical table of LULC of 2015 for the study area.

Pixel Value	Classes	Count	Area	PCT(%)
1	Built up	69844	62859600	7.37
2	Farm	67836	61052400	7.16
3	Light Forest	446624	401961600	47.13
4	Thick Forest	263006	236705400	27.75
5	River	19399	17459100	2.05
6	Bare Land	80989	72890100	8.55
Total		947698	852928200	100.00

Source: Author’s Field Work (2025)

Figure12 below revealed the graphical representation of what transpired in the year 215 and part of 2024 in terms of land use and land cover.

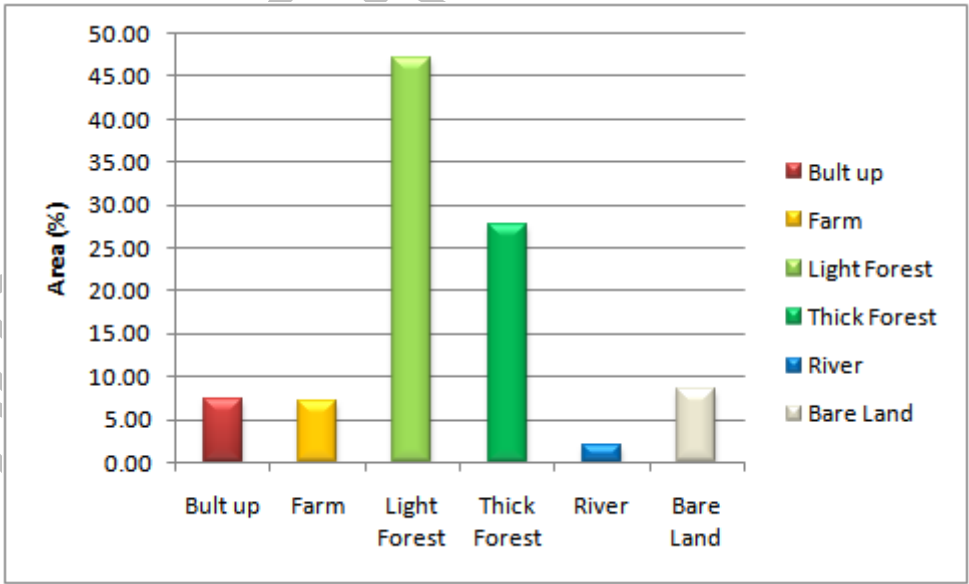


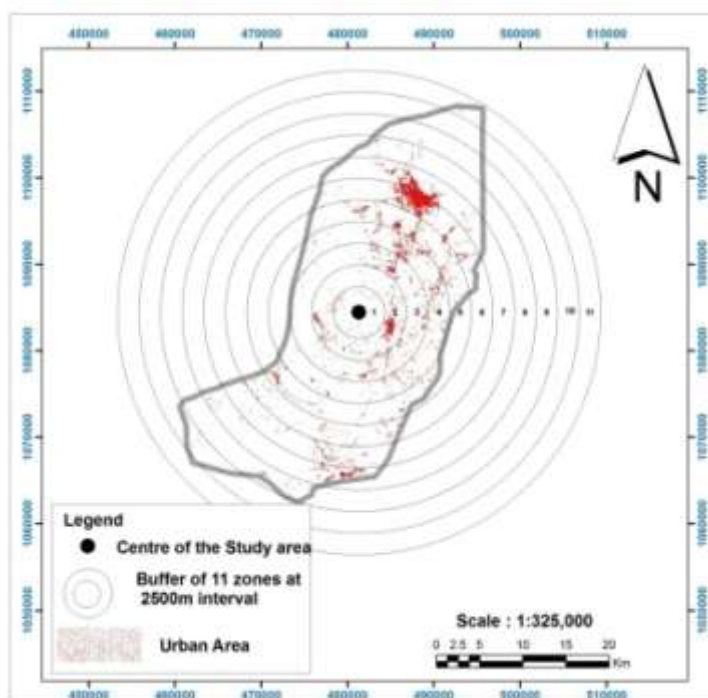
Figure 14: Histogram of LULC of study area in 2015

Source: Author’s Field Work (2025)

Output 7

Identification of Urban Sprawl in 2000

335 The main feature class for this study are Jos and Bukuru city centers which are represented as point features with equal status
 336 but not weighted distance of multiple rings like buffer in each of the zone. The resulting polygon table will have identifiers for
 337 each of the polygons created in the buffering process, and an additional attribute indicating if the particular polygon lies inside
 338 or outside the buffer zone (see Tables 6 and 7 below) However, for this article, all the polygons were lying inside the buffer
 339 zone since buffer zone is a specified zone and it is equi-distance (2500meter) , but not weighted. The purpose of buffering is to
 340 carryout analysis that would vividly reveal how settlements are supposed to be fashioned such that, the required socio-
 341 economic facilities are available and climate change did not constitute issues to the settlements. The GIS process of buffering a
 342 point data (Jos and Bukuru city centers depicted as point feature) simply involves the creation of a ‘circular’ polygon about
 343 each point of radius equal to the buffer width. For the two multiple points (Jos and Bukuru), the layers are being buffered and
 344 the system must check for overlaps in each point’s buffer. Any overlapping sections must be removed, in order that the result
 345 of the operation depicts polygons representing the area covered by all overlapping buffers. This process involves two
 346 additional operations: intersection and dissolve. The buffering process results in a new layer in the system consisting of
 347 polygon data which represents the buffered eleven zones of fixed not weighted distance as revealed for year 2000 in figure
 348 4.11 and for year 2015 in figure 13 below..



349
 350 **Figure 15.** Urban Sprawl in Year 2000 using Shannon Entropy.

351 Source: Author’s Lab work (2025)

352 Table 6 below revealed zones 1-5 which are compacted type of settlement sprawling with an Entropy of between 0.01 and
 353 0.20: meaning that, these zones have more human population and building density than zone six (dispersed), while zones seven
 354 to eleven are also compact with entropy between 0.06 and 0.13. This means the two city centers are highly concentrated in the
 355 year 2000 and the \log^n for these zones have not exceeded its limit. When comparing the total land cover in square meter of zone
 356 one and the proportion of land occupied (density) by built up areas, it is almost insignificant (0.019%) and it is the same for
 357 other classes, except for zone two.(6.19%). This further confirms what transpired in Table 4 above.

358 **Table 5:** Estimate of Urban Sprawl in 2000 (Shannon Entropy).

Zones	Built up Area (m2)	Zone	Density	PDENi	$\log(1/PDENi)$	Log (n)	Entropy	Sprawl
1	523800	27482341.05	0.01	0.43	0.36	1.04	-0.15	Compact
2	4133700	66752345.42	6.19	1.41	-0.15	1.04	0.20	Compact
3	4504500	106021165.6	4.25	0.96	0.02	1.04	-0.01	Compact
4	5683500	120571096	4.71	1.07	-0.03	1.04	0.03	Compact

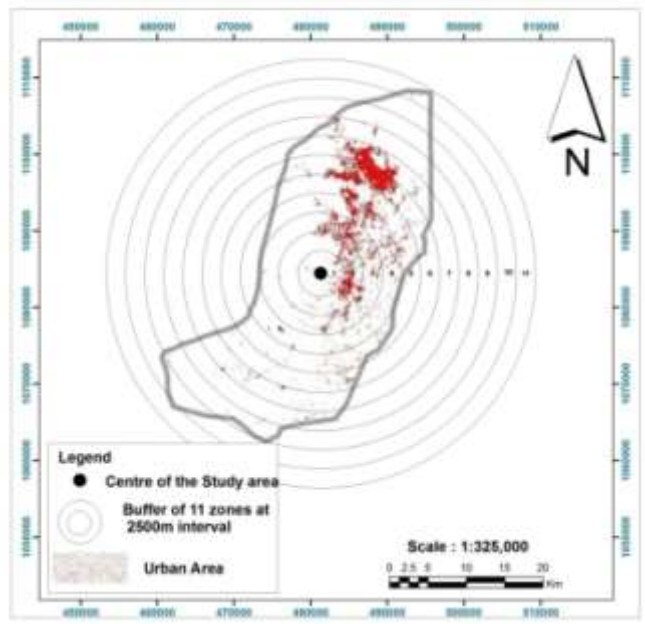
5	5123700	112795010	4.54	1.03	-0.01	1.04	0.01	Compact
6	9148500	106740053.1	8.57	1.94	-0.29	1.04	0.54	Dispersed
7	5307300	105516389.9	5.03	1.14	-0.06	1.04	0.06	Compact
8	2580300	91610652.69	2.82	0.64	0.19	1.04	-0.12	Compact
9	421200	73545004.15	0.57	0.13	0.89	1.04	-0.11	Compact
10	75600	34667978.01	0.22	0.05	1.31	1.04	-0.06	Compact
11	51300	6425734.643	0.80	0.18	0.74	1.04	-0.13	Compact
n	37553400	852127770.6	4.41	1.00	0.00	1.04	0.00	Compact

359 Source: Author's Lab work (2025)

360 **Output 8**

361 Identification of Urban Sprawl in 2015

362 The buffer for the year 2015 and part of the year 2024 was the same process with that of year 2000 round the two city centers
363 using the same 2500meter interval. Intersection and dissolve operations were carried out at prompt of ArcGIS in order to trim
364 out the land area that is outside the zone of the study area, i.e. Jos and Bukuru boundaries already delineated in the composite
365 map (see figure 4.6 above). Please note that, the interval between the eleven zones were also not discriminated and not
366 weighted as well. This was done in order to make easy comparisons between the 15-years under review and also to measure
367 impact.



368
369 **Figure 16:**Urban Sprawl of 2015 and Part of 2024 (Shannon Entropy).

370 Source: Author's Lab work (2025)

371 **Output 8**

372 There are remarkable differences between the entropy values of year 2015 and some parts of 2024 when compared with year
373 2000 under review in terms of land cover per zone and their densities. Zone one in the year 2015 had an approximate density
374 of 3.91% with 0.14 entropy while in the year 2000 it was 0.01%.. Zones one to five are compact type of settlement sprawl,
375 especially towards the edges of the city centers with an entropy between 0.04 to 0.36 and all having the same logⁿ. This means
376 the population clusters are higher with increased built-up areas springing up everywhere, particularly in the year 2024. It also
377 means that, more land areas are being occupied, because of increased human activities. Zone six is dispersed having a density
378 of 0.15, while the same zone six in years 2000 had a density of 8.57. This means many people have relocated outside the city

379 centers to another part of the study area. Table 7 below explains further the estimation derived from the Shannon Entropy
 380 computation.

381 **Table 6:** Estimate of Urban Sprawl in 2015 (Shannon Entropy).

Zones	Built up Area (m2)	Zone	Density	PDENi	log(1/PDENi)	Log (n)	Entropy	Sprawl
1		27482341.05	3.91	0.53	0.28	1.04	0.14	Compact
2	8244000	66752345.42	12.35	1.67	-0.22	1.04	0.36	Compact
3	10463400	106021165.6	9.87	1.34	-0.13	1.04	0.16	Compact
4	8442000	120571096	7.00	0.95	0.02	1.04	0.02	Compact
5	7560000	112795010	6.70	0.91	0.04	1.04	0.04	Compact
6	15672600	106740053.1	0.15	1.99	-0.30	1.04	0.57	Dispersed
7	9470700	105516389.9	8.98	1.22	-0.09	1.04	0.10	Compact
8	1502100	91610652.69	1.64	0.22	0.65	1.04	0.14	Compact
9	161100	73545004.15	0.22	0.03	1.53	1.04	0.04	Compact
10	23400	34667978.01	0.07	0.01	2.04	1.04	-0.02	Compact
11	230400	6425734.643	3.59	0.49	0.31	1.04	0.15	Compact
n	62843400	852127770.6	7.37	1.00	0.00	1.04	0.00	Compact

382 Source: Author's Lab Work (2025)

383 5. Conclusions

384 The deployment of remote sensing tool to determine the magnitude of settlement sprawl in the two city centers for the past 15-
 385 years and above was accomplished with six (6) different types of land use and land cover. Although, the task was stressful but
 386 the art and science of remote sensing with geographic information system (GIS) tools became a veritable tool to achieve the
 387 said objective of this article. The buffer operations carried out in all the 11-zones of the study areas revealed the leapfrog built-
 388 up areas at the edges of the city centers. The buffer at 2500meter would enable planners and government to make policies for
 389 effective planning in order to avoid slums and effective infrastructural distribution to the teeming populace

390 Urban growth in Jos and Bukuru city centers as analyzed and revealed above using remote sensing technique serves as a model
 391 foe which effective planning and control of indiscriminate sprawling of buildings around the fringes of the city centers.

392 The buffer created around point features serves as a guide to provide drainage and wastes disposal system within the city
 393 centers, thereby reducing the risks of flooding, health hazards and restoring or maintaining the aesthetics of the city centers.

394 The model would assist the land authority to have a comprehensive land information system (LIS), in order to harness the
 395 available land resources and generate revenues for the authority.

396 Buffering is often done by increasing the distance at constant rate in specified direction. The buffering process does not change
 397 evenly if the shape of the spatial extent changes and the final spatial delineation may be reached non-simultaneously. It was
 398 constructed shape-based buffers from generator points and their constrained convex polygons to address the conceptual
 399 question of simultaneity in distance-based buffer. The process is conformal to the initial constraint shapes, which are
 400 predetermined by other factors or processes. This method can be applied to situations where the final scenario is preset and the
 401 delineation of a space must be reached simultaneously. This method has potential application in emergency preparedness and
 402 response to better address fairness issues when a geographic region must be zoned arbitrarily. The limitation of the method is
 403 that when the preset shape is concave and the generator

404 point is very off-centered, the buffered shape may not be bounded by the initial spatial extent. The method is developed and
 405 implemented using VBA scripts, and could serve the GIScience community at large.

406 Abbreviation

408 **acknowledgments**

409 I cannot forget the constructive criticism from Dr. R.N. Ndukwu, which provided great impetus for the completion of this article.

410 My professional friend and colleague; Suleiman Lamidi whose contribution cannot be forgotten, particularly during filtering
411 and image classification for the phenology of potato fields for this article.

412 The contributions of Chukwunonyelum Ike can never be over-emphasized, especially when analyzing the environmental
413 consequences of continuous fluvial flow in the study area.

414

415 **Conflicts of Interest**

416 Tjere is no conflict of interest with any Author.

417 **REFERENCES**

- 418 [1] Arevalo-Valle, R.B.; Contreras-Reyes, J.E. Stehlik, M. (2013): Generalized skew-normal negentropy.
419 [2] Burgess, Ernest (1925): Concentric Zone Model for an Ideal City..
420 [3] Butz, T.; Thiran, J.P. (2002) From error probability to information theoretic (multi-modal) signal processing. Elsevier
421 Signal Process. 2005, 85, 875–902. [Cross Ref]
422 [4] Di-Lorenzo (2016): The Concept of Urban Sprawl and Its Causes.
423 [5] Entropy (2017-19): Applications to fish condition time factor time series, 528.
424 [6] Fisher, J.W, et al, (2002): Statistical and information-theoretic methods for self-organization and fusion of multimodal,
425 networked sensors. Int. J. High Perform. Computer. Appl. 2002, 16, 337–353.
426 [7] Galster et al. (2001): Physical Pattern Defining Sprawl.
427 [8] Gokcay, E.; Principe, J.C. (2002): Information theoretic clustering.
428 [9] Henning Nussli et al, (2021); Urbanization and Land Use Change.
429 [10] IEEE (2024): Trans. Pattern Anal. Mach. Intell. 2002, 24, 158.
430 [11] Kim, J.; et al. (2005): A non-parametric statistical method for image segmentation using information theory and curve
431 evolution. IEEE Trans. Image Process. 2005, 14, 1486–1502.
432 [12] Kullback, S. (1958): Information Theory and Statistics; Wiley: New York, NY, USA, 1958.
433 [112] Padmanabhan, M.; Dharanipragada, S. (2013): Maximizing information content in feature extraction. IEEE Trans. Speech
434 Audio Process. 2005, 13, 512–519. [Cross Ref]
435 [13] Principe, J. (2013): Information Theoretic Learning: Renyi Entropy and Kernel Perspective; Springer: New York, NY,
436 [14] Prince & Florence (2013): Digital Image Processing and Geographic Information System (GIS).
437 [15] Silva, J.; Narayanan, S. (2007): Minimum probability of error signal representation. Presented at IEEE Workshop
438 Machine Learning for Signal Processing, Thessaloniki, Greece, 27–29 August 2007; pp. 1–4.
439 [16] Steven, Haddock (2017): How Urbanization Different from Urban Growth and Urban Development.
440 [17] Squires, G. D. et al, (2002): Urban Sprawl and the Uneven Development of Metropolitan America.
441 [18] Wilson et al. (2003): development of a geo-spatial model to quantify, describe and map urban growth.

442

443